

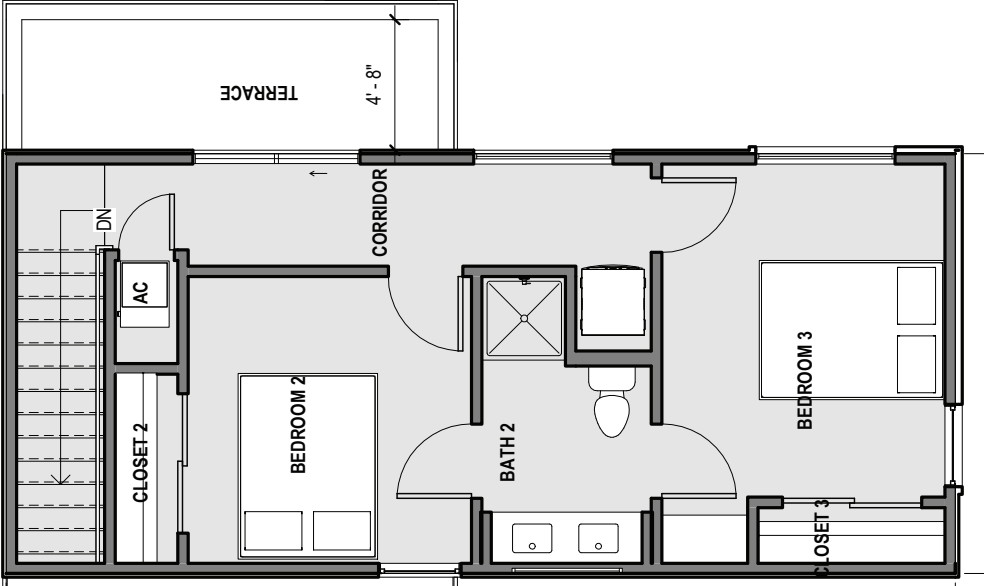
Pivot Series **homes**

DESIGNED FOR URBAN
NEIGHBORHOODS

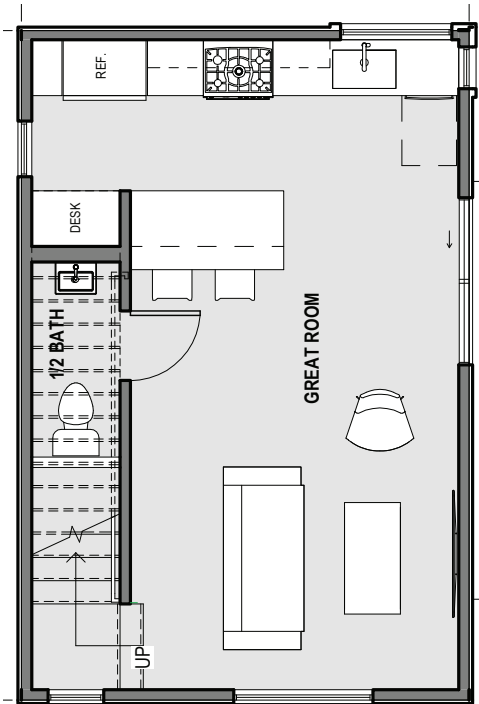


■ **box**prefab

Pivot 900sf

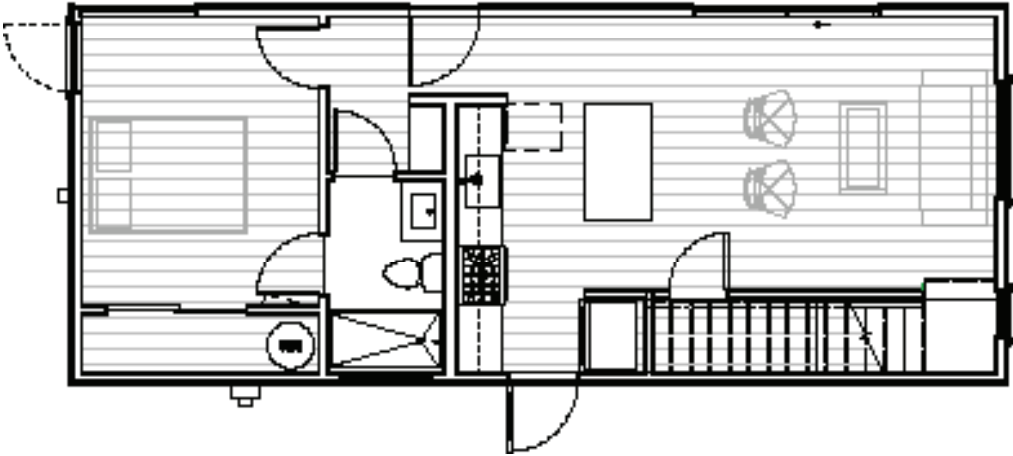
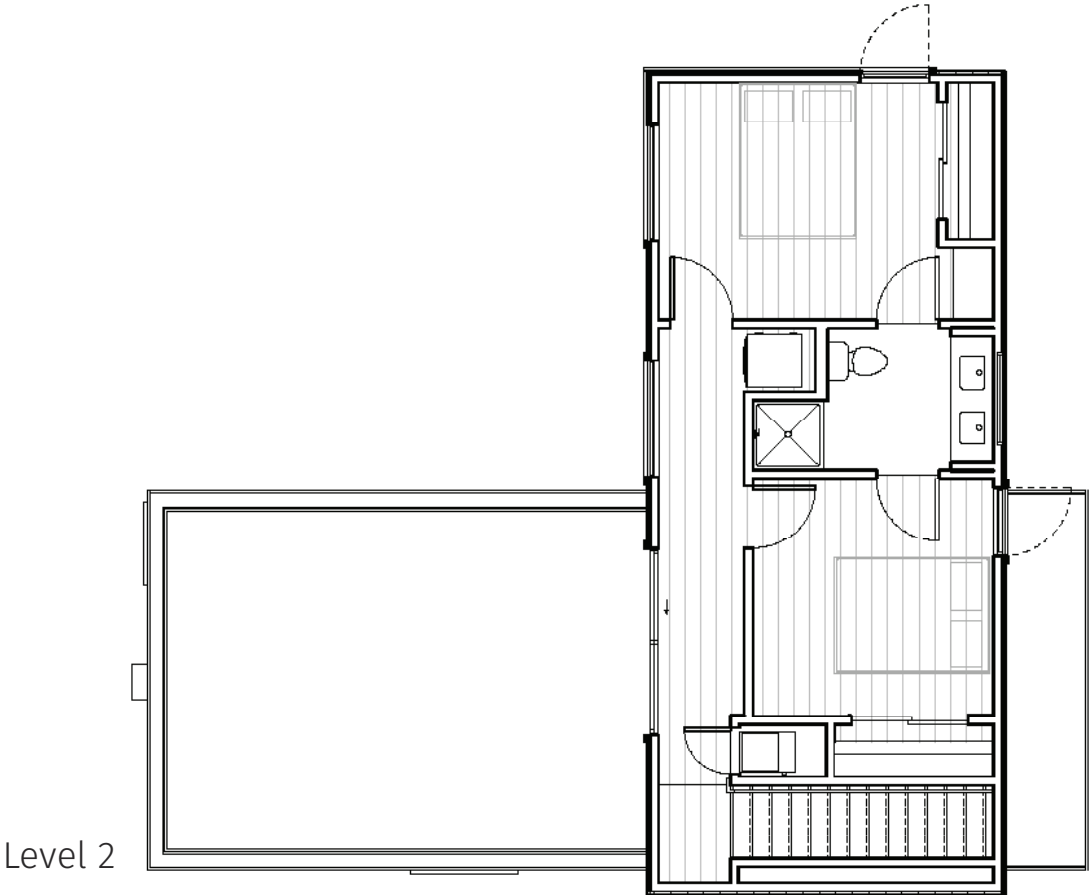


Level 2

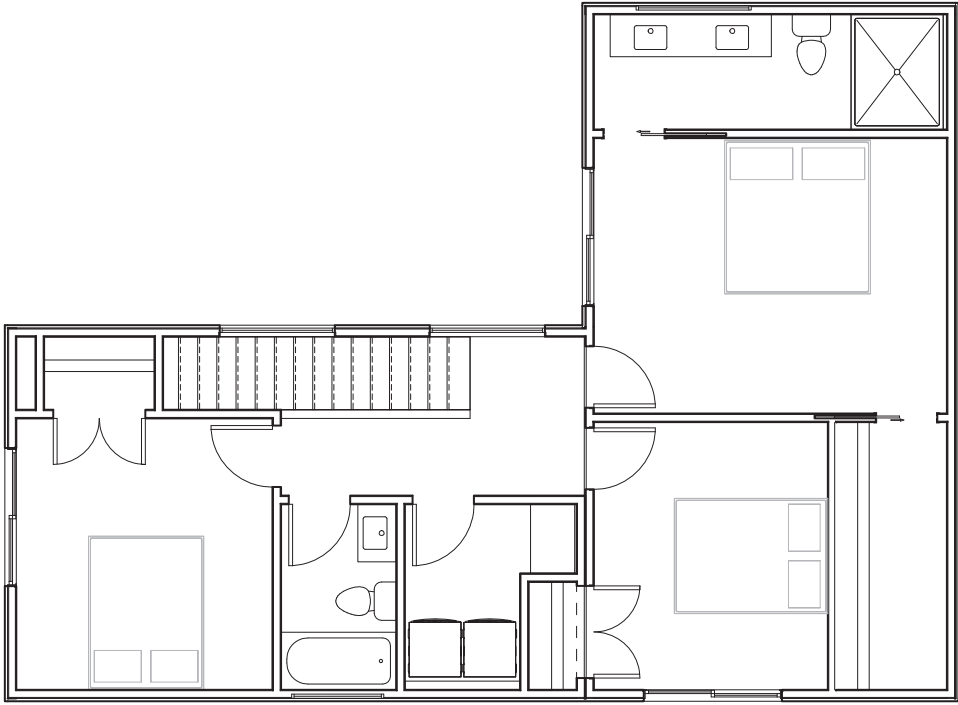


Level 1

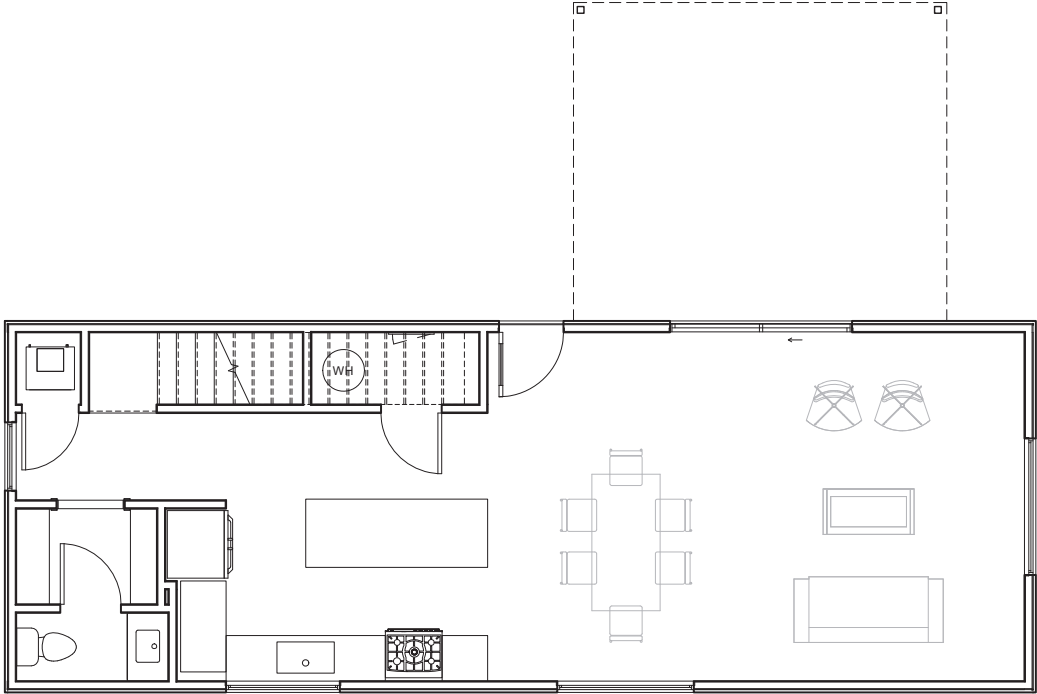
Pivot **1100sf**



Pivot 1545sf



Level 2



Level 1

“pivoting
volumes
**define
outdoor
spaces .”**



Pivot Series Specifications

EXTERIOR

Standing seam metal or TPO membrane roof
Lap siding with upgrade options
Thermally broken windows with aluminium upgrade options
Upgrade option for exterior porch off living room

INTERIOR

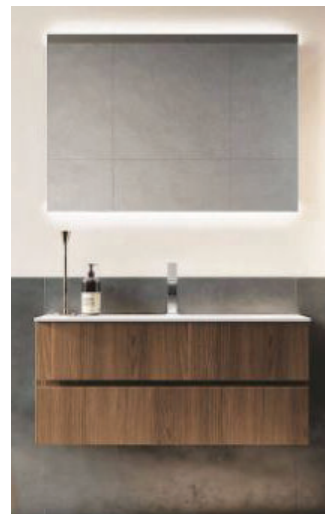
Hardwood flooring with porcelain tile at baths
Recessed LED lighting with lighting control system
Low VOC Paint

KITCHEN

Appliance options for LG, Bosh, or Thermador
Caesarstone Quartz countertops
Luxury Armony Cucine European kitchen cabinetry

BATHS

Hansgrohe plumbing fixtures
Luxury European Puntotre vanities



Pivot Series Features

**Smart sustainable homes.
Simple Process.**



Smart

Energy efficient envelope and design. Resilient low maintenance materials and design. Constructed without weather exposure. Low-e insulated windows. High efficiency spray foam insulation and AC system. Smart lighting controls, with programmable features.



Sustainable

Reduced site impacts. Reduced waste. LED lighting. Low VOC paint. Efficient plumbing fixtures and appliances. Improved indoor air quality.



Universal Design / Aging in Place

Lever style door hardware, Lever style plumbing fixtures. Low threshold shower. Slip resistant transition-less flooring. Light and Bright finishes. Option to add grab bars. Option for handshower. Option for raised WC seat / and or bidet WC seat. Option to add ramp at entry. Option for drawer MW, DW and Refrigerator.

Inspired by pivoting volumes, the second floor provides shaded outdoor space at ground level while the top of the first floor serves as an extension of space for the second floor with elevated outdoor views.

boxprefab

5311 Clinton Drive
Building 8
Houston, TX 77020
713.236.0071
info@boxprefab.com
www.boxprefab.com

boxprefab